

Fix Connection Issues

If your Windows 10 computer was updated to 1809 or 1903 or later, then DDC may lose the ability to connect to the CP15, DPU or EPU.

In Apps & Features check your versions of DDC Prerequisites and DDC 2.x.x.x
Compare to the latest versions at ftp.dynatest.com/downloads/DDC2 and update as required

NOTE: Always un-install the old version before a re-install

PING 192.168.1.15 (CP15) 192.168.1.3 (DPU) or 192.168.1.4 (EPU) must succeed

If PING fails, then you have another problem... skip the rest

In Windows Explorer right click "This PC" and chose "Map network drive..."

Enter \\CP15\C or \\RSP3\C or \\RSP4\C and click [Finish]

What network folder would you like to map?

Specify the drive letter for the connection and the folder that you want to connect to:

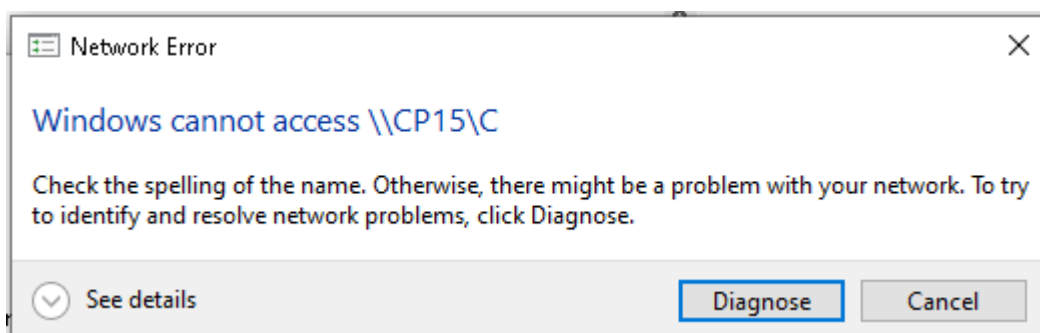
Drive: Z: (dropdown)

Folder: \\CP15\C (dropdown) [Browse...]

Example: \\server\share

Reconnect at sign-in

Connect using different credentials



This message means that SMB File Sharing is blocked and that is the reason - Click [Cancel]

If mapping succeeds, then you have another problem...skip the rest

Copy the following file to a USB stick:

CP15: C:\Program Files (x86)\Dynatest\FwdWin\FWD\CP15SHOE.EXE

RSP3: C:\Program Files (x86)\Dynatest\RspWin\RSP\RSP3BOOT.EXE

RSP4: C:\Program Files (x86)\Dynatest\RspWin\RSP\RSP4BOOT.EXE

Get hold of any old not-updated computer. Windows 7+, 32 or 64 bits will do

Setup a fixed TCP/IP of 192.168.1.99

Connect to the electronics

Do the drive mapping as above (in the following your Z: may be another letter)

In Z:\APP delete the old CP15SHOE.EXE or RSP3BOOT.EXE or RSP4BOOT.EXE

Copy the new file from the USB stick to Z:\APP

In Z:\APP delete CP15**MAIN**.EXE or RSP3**MAIN**.EXE or RSP4**MAIN**.EXE (if any)

Switch off electronics and reconnect to the updated Windows 10, 64 bit computer

